

Photometric Report

MAC Aura XB – Narrow

MARTIN PROFESSIONAL R&D OPTICAL LABORATORY

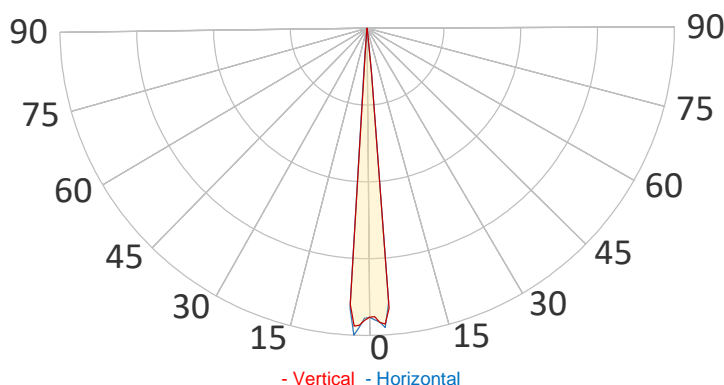
GENERAL SPECIFICATIONS

Total Fixture Output:	6000 lm
Light Engine Output:	10 klm
Efficacy:	27 lm/W
Lens Option:	N/A
Beam Angle (50%):	9,0-41,7°
Field Angle (10%):	10,3-59,1°
Cut-off Angle (3%):	11,6-72,2°
CRI:	67
CQS:	82
TM-30 Rf:	76
TM-30 Rg:	119
TLCI:	48
Color Temperature:	8500 K

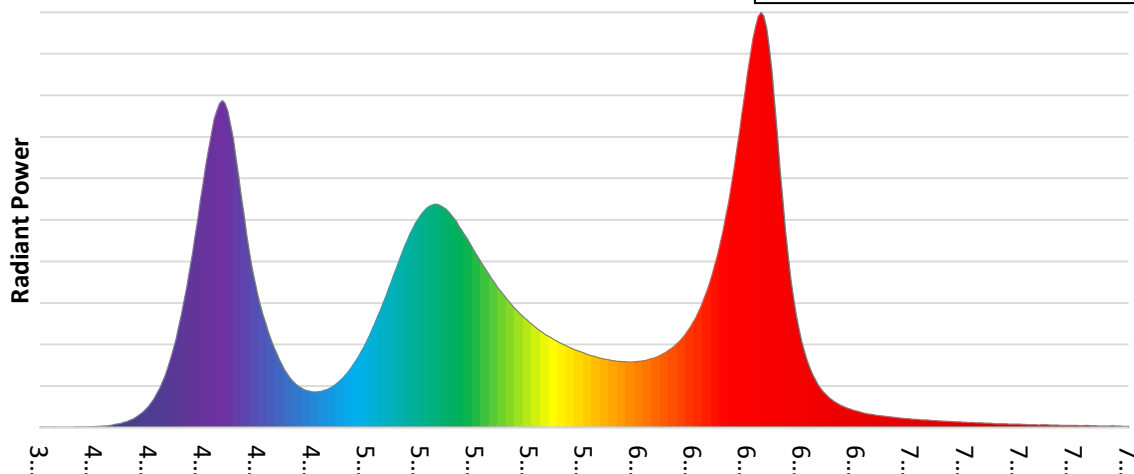


SAMPLE MEASUREMENT

POLAR PLOT



SPECTRAL DISTRIBUTION



Catalog Number:	90232100HU
Measured Output:	4271 lm
Measured Peak:	219569 cd
Consumed Power:	225 W
Efficacy:	19,0 lm/W

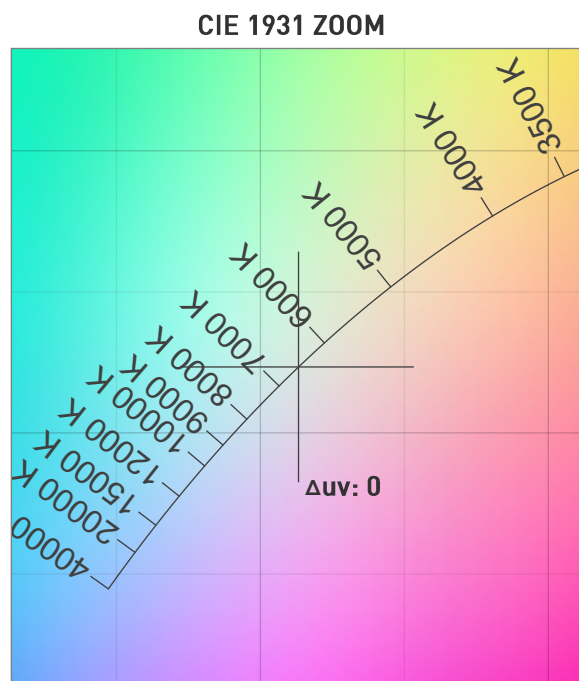
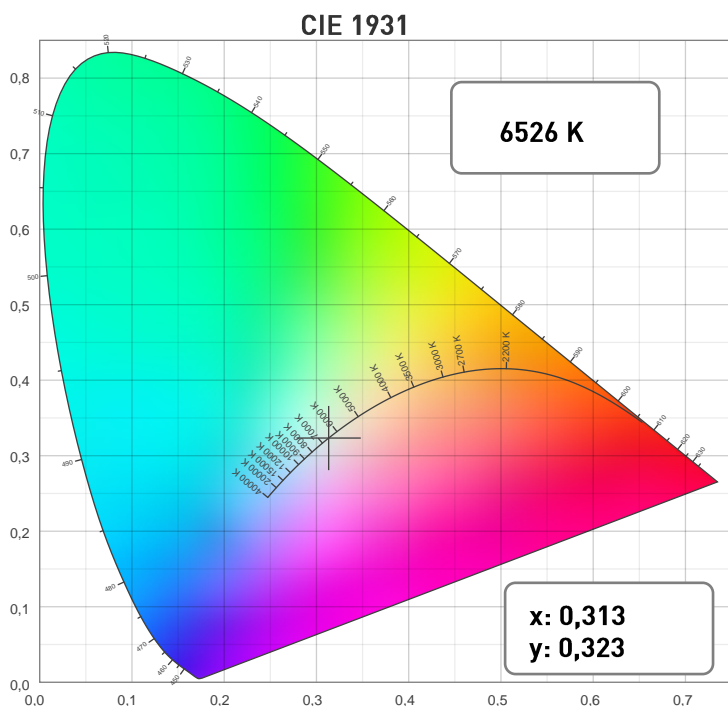
Beam Angle (50%):	9°
Field Angle (10%):	10,3°
Cut-off Angle (3%):	11,6°

Measurement Condition:	
Ambient Temperature:	25° +/- 5° C
AC Supply:	230V/50Hz
Fan Mode:	Full Fan
Fixture Warm-up Time:	30 minutes

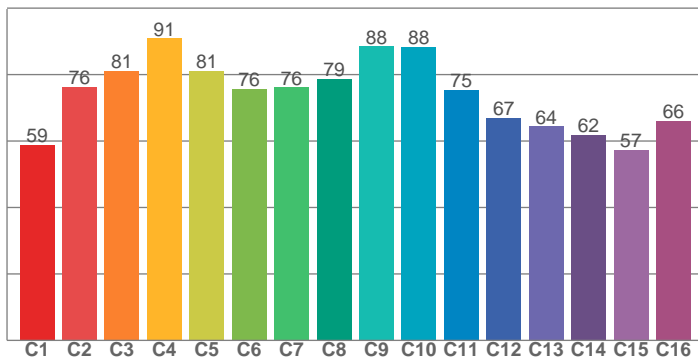
Photometric Report

MAC Aura XB – Narrow

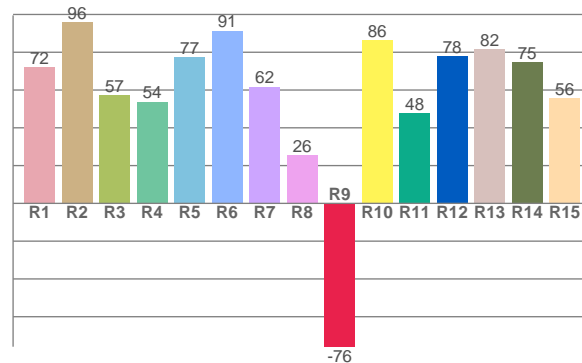
CHROMATICITY



TM30: 75,6



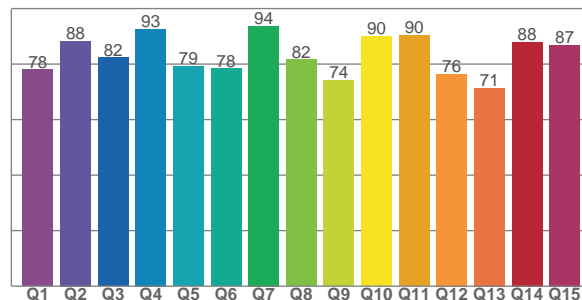
CRI: 66,8 (R1-R8)



COLOR PARAMETERS

Color Temperature	Color Rendering Index	Red Component	Color Fidelity	Color Gamut
CCT	CRI	CRI R9	TM30 Rf	TM30 Rg
6526 K	66,8	-75,9	75,6	119,2

CQS: 82,1



Television Lighting Consistency Index	Color Quality Scale	Color Coordinate CIE 1931	Color Coordinate CIE 1931	Color Coordinate CIE 1964	Color Coordinate CIE 1964	Color Deviation from Black Body
TLCI	CQS	x	y	u	v	Δuv
48	82,1	0,313	0,323	0,200	0,310	0

Photometric Report

MAC Aura XB – Narrow

TM30

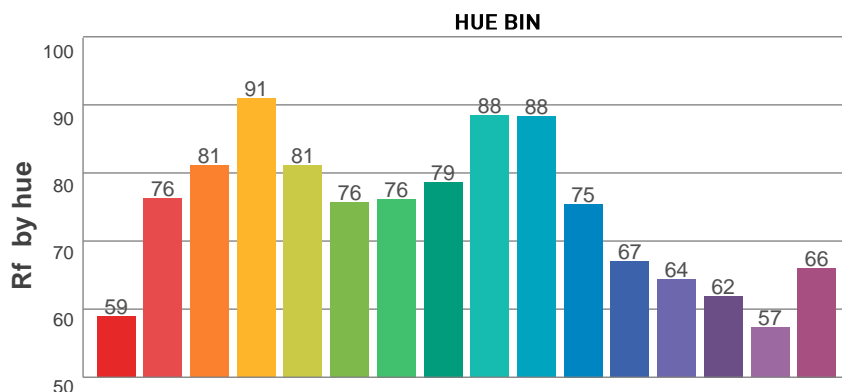
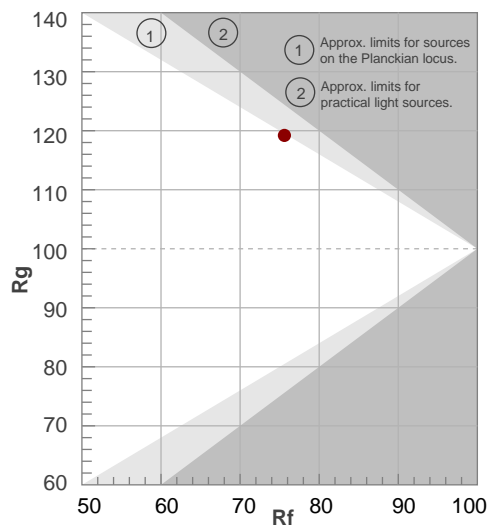
Rf 75,6

Fidelity index Rf

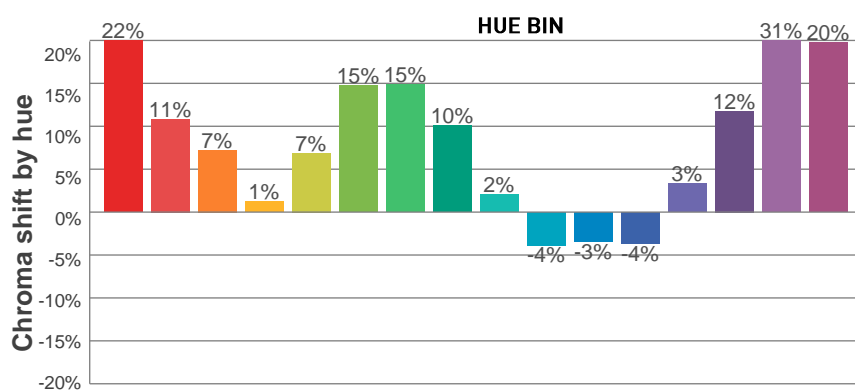
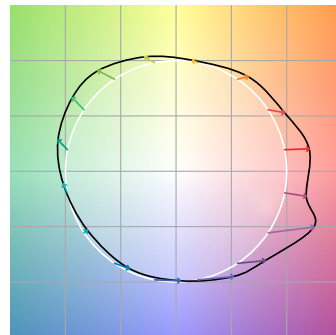
Rg 119,2

Gamut index Rg

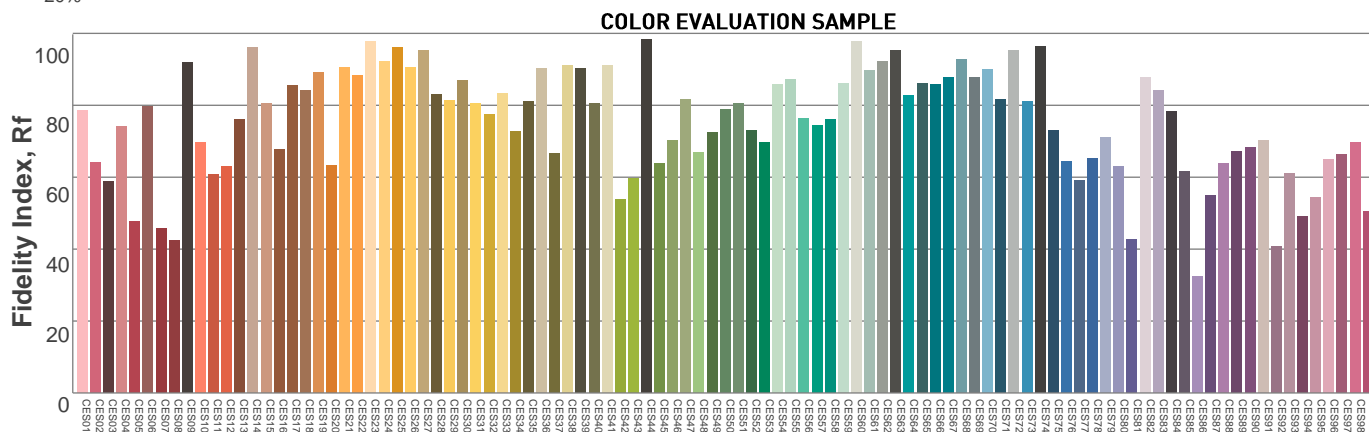
Hue Bin	R _f	Graphic shifts (%)	
		Chroma	Hue
1	59	22%	-4%
2	76	11%	-10%
3	81	7%	-7%
4	91	1%	5%
5	81	7%	8%
6	76	15%	8%
7	76	15%	-3%
8	79	10%	-7%
9	88	2%	-9%
10	88	-4%	0%
11	75	-3%	14%
12	67	-4%	23%
13	64	3%	32%
14	62	12%	22%
15	57	31%	27%
16	66	20%	1%



COLOR VECTOR GRAPHICS



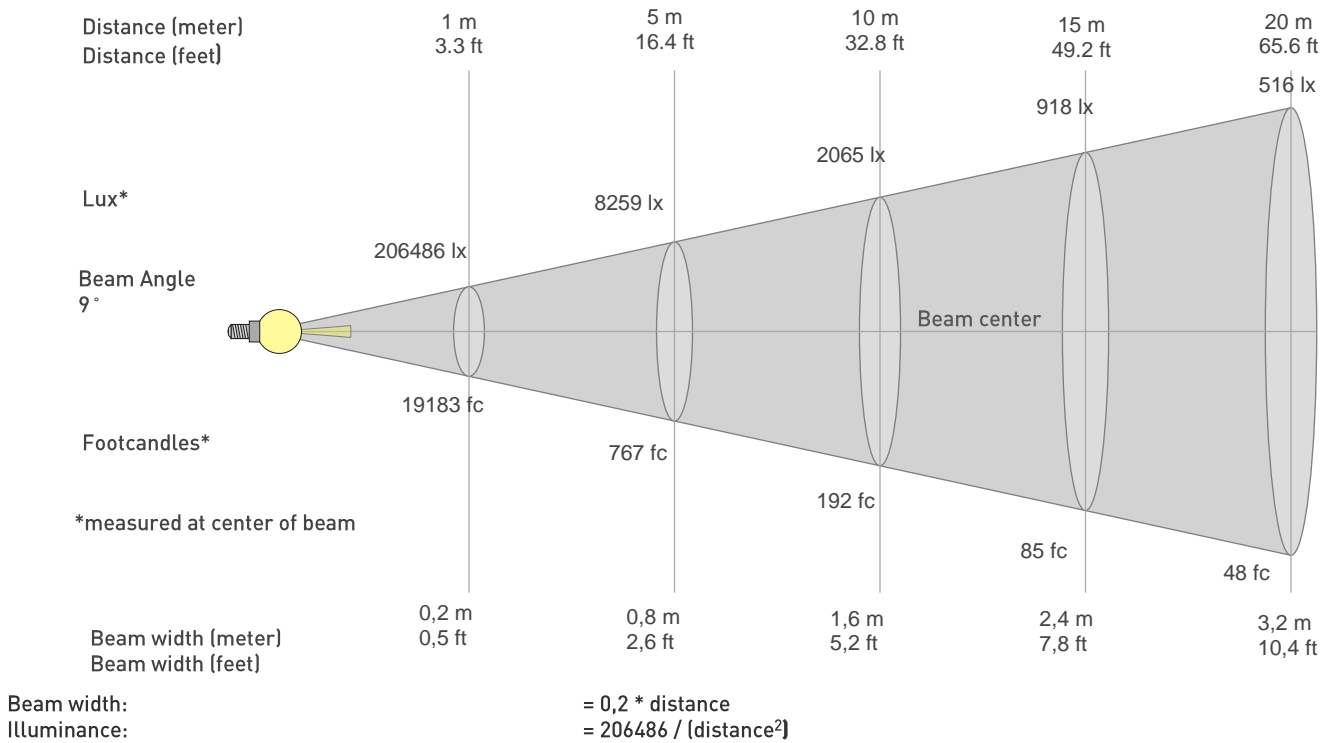
COLOR DISTORTION GRAPHICS



Photometric Report

MAC Aura XB – Narrow

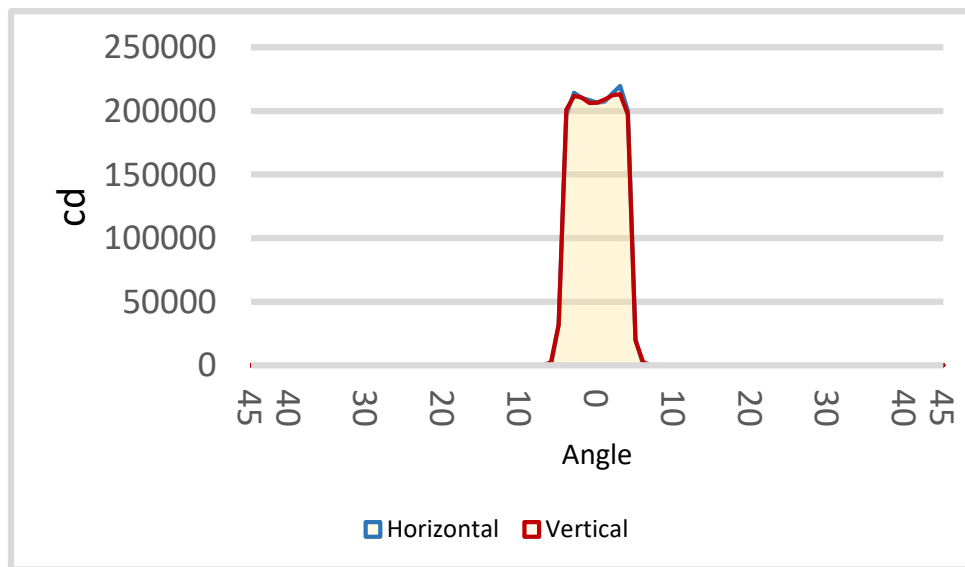
BEAM DETAILS



distance in [m] for illuminance in [lux] distance in [ft] for illuminance in [fc]

BEAM ILLUMINANCE FROM 1-20M

1m	2m	3m	4m	5m	6m	7m	8m	9m	10m	11m	12m	13m	14m	15m	16m	17m	18m	19m	20m
3,3ft	6,6ft	9,8ft	13,1ft	16,4ft	19,7ft	23ft	26,2ft	29,5ft	32,8ft	36,1ft	39,4ft	42,7ft	45,9ft	49,2ft	52,5ft	55,8ft	59,1ft	62,3ft	65,6ft
206486lx	51621lx	22943lx	12905lx	8259lx	5736lx	4214lx	3226lx	2549lx	2065lx	1706lx	1434lx	1222lx	1053lx	918lx	807lx	714lx	637lx	572lx	516lx
19183,2fc	4795,8fc	2131,5fc	1198,9fc	767,3fc	532,9fc	391,5fc	299,7fc	236,8fc	191,8fc	158,5fc	133,2fc	113,5fc	97,9fc	85,3fc	74,9fc	66,4fc	59,2fc	53,1fc	48fc



BEAM ANGLE 50%	FIELD ANGLE 10%	CUTOFF ANGLE 3%
9°	10,3°	11,6°